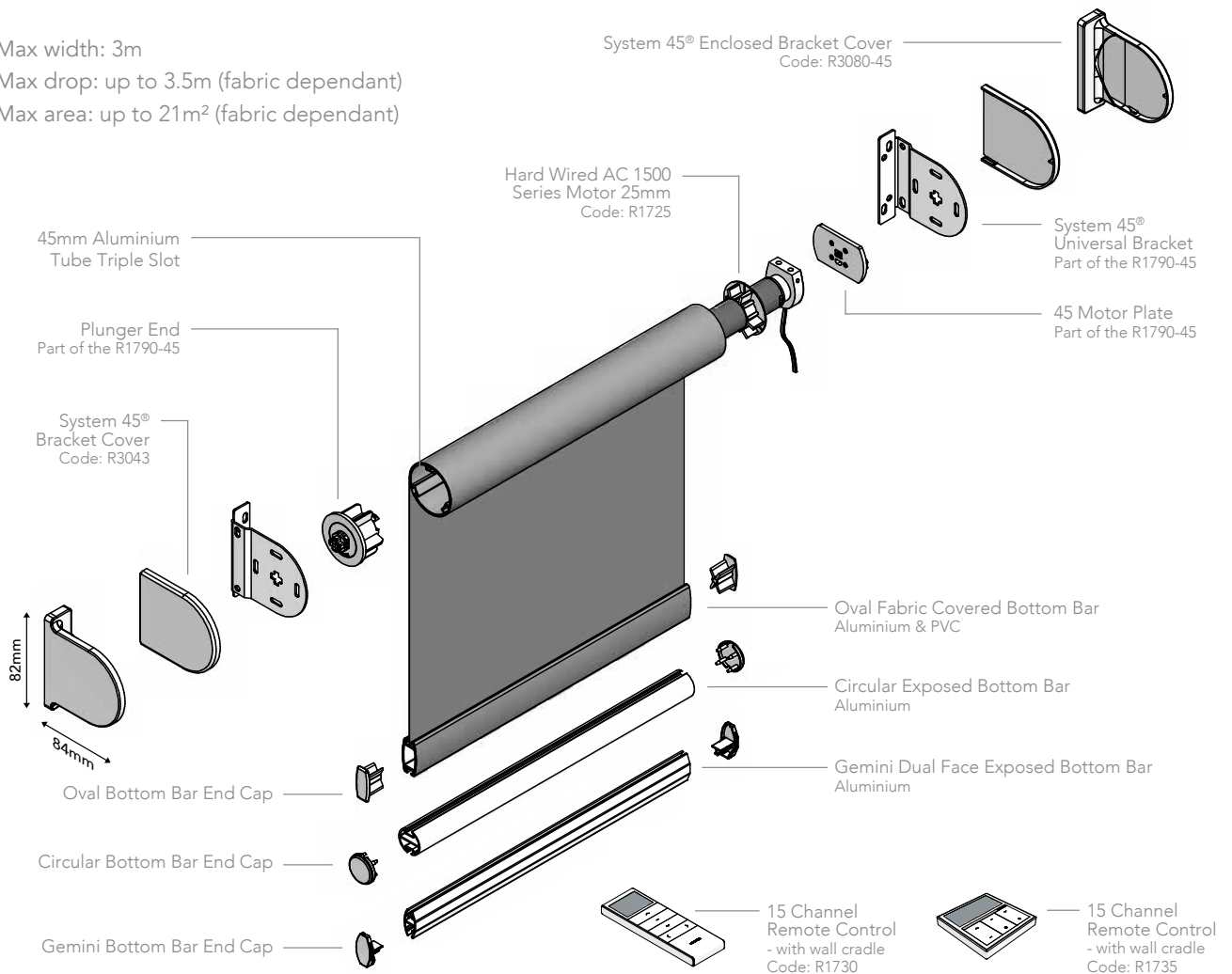


# SYSTEM 45<sup>®</sup> MOTORISED ROLLER SYSTEM WITH THE HARD WIRED AC MOTOR - 1500 SERIES

Max width: 3m  
Max drop: up to 3.5m (fabric dependant)  
Max area: up to 21m<sup>2</sup> (fabric dependant)



- Operate large blinds effortlessly with Louvolite One Touch™ Hard Wired AC Motor 1500 Series.
- Manufactured using high quality engineering grade polymer.
- Universal brackets enable easy and quick installation.
- For use with the 35mm, 40mm and 45mm tubes
- For blinds up to 3m wide, with a 5kg maximum holding weight - for blinds up to 12kgs use the One Touch 6000 Series (R1740).
- Limits to stop blind at highest, mid and lowest point.
- Operate up to 15 blinds, separately or simultaneously, from anywhere in the room with the 15 channel remote (R1730 and R1735).
- A patented idle end adapter plate with locking body ensures the blind remains safely locked into the brackets at all times. Child safe by design.
- Can be operated with the Louvolite Smart Home Hub (R1764-UK). Using wifi any One Touch blinds can be operated remotely via the app on a smart phone/tablet or by voice command with Amazon Echo, Google Home and Siri.
- Colours available: 35, 40, 45mm motor pack: white, beige and black; 40/45mm cassette motor set and remotes: white

# HARDWARE SPECIFICATION

## Motorised Roller System

Our motorised roller blinds are manufactured using the specifically designed grooved aluminium tubing. The specified fabrics are formed and held into the tube with locking tape.

The brackets are made from mild steel, zinc plated and powder coated, suitable for top, face or side fixing.

A sprung plunger end mechanism is positioned at the opposite end to the motor plate, providing a more secure fit of the blind.

## Performance

To ensure a positive performance, all Louvolite components are designed and manufactured in the UK using prime quality plastic materials.

10 year life cycle testing is done to ensure long lasting performance.

## Operation

Using motorised operation, all blinds must be compliant with the child safety elements of BS EN13120.

## Bottom Bar

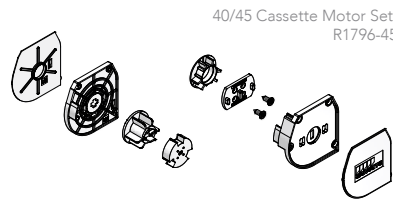
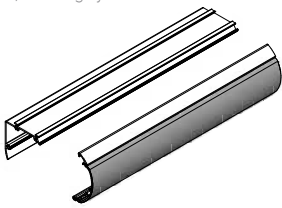
Oval, made of aluminium or pvc, can be single or double wrapped in fabric or left exposed, while circular and the dual face Gemini, made of aluminium, only have the fabric formed and locked into the top part to leave the bar exposed. All fabric is formed and held into place with locking tape. The dual face Gemini bar, smooth on one side and angular on the other, improves the ease of manufacture and use of thicker laminate fabrics.

## Maintenance

All of the roller blind system components are manufactured using aluminium, treated steel and plastic. They do not present any corrosion problems in normal environments. The system has been designed for a smooth operation, together with a rigidity to prolong the window blind's working life.

# ADDITIONAL OPTIONS - CASSETTES

System 40/45<sup>®</sup> Fascia Cassette  
Code: R3519/3522  
white, black & grey



## SYSTEMS MAX BLIND SIZE

## 1500 SERIES

	FABRIC GROUP	BLIND WIDTH (m) FOR BLIND DROP (m)						MAX HOLDING WEIGHT	PARAMETERS		FEATURES	
		0.5	1.0	1.5	2.0	2.5	3		Rated Torque	1.5Nm	Min Blind Width	500mm
35 <sup>®</sup>	up to 200g/m sq	3.0	3.0	3.0	2.0			4lb blind at 4mm	Rated RPM	32rpm		
	200 > 320g/m sq	1.7	2.0	2.0	1.5				Motor Diameter	25mm		
	320 > 485g/m sq	1.9	2.0	2.0	1.5				Rated Voltage	DC110V /230V		
40 <sup>®</sup>	up to 200g/m sq	5.0	5.0	5.0	5.0	5.0		9lb blind at 6mm	Rated Power	15.3W	Power Source	Mains Powered
	200 > 320g/m sq	3.75	3.75	3.75	3.75	3.75			Rated Current	0.13A		
	320 > 485g/m sq	5.0	5.0	5.0	3.55	2.7			IP Class	IP44		
45 <sup>®</sup>	up to 200g/m sq	6.0	6.0	6.0	6.0	6.0	4.5	12lb blind at 6mm	Cable	2 core		
	200 > 320g/m sq	4.75	4.75	4.75	4.75	4.75	2.80		Inbuilt Receiver	Yes		
	320 > 485g/m sq	6.0	6.0	6.0	5.0	4.0	1.85					

\*based on using Carnival fabric

For the most up-to-date information view the online pdf at [www.louvolitecommercial.com/systems/](http://www.louvolitecommercial.com/systems/)

Your Louvolite AC Hard Wired Motorised Roller System Distributor:



CI/SIB 1976 reference by SIB Agency

(76.7) X