

# R1905 0.5NM LITHIUM MOTOR

## Operating Instructions

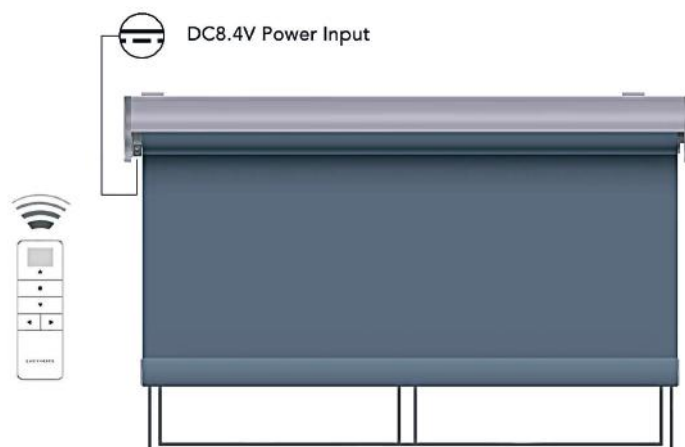
### MOTOR ASSEMBLY



- Motor comes with System 32<sup>®</sup> crown fitted.
- Push fit the motor plate in either left hand or right hand orientation as required, with the charge point facing the front.

### POWER SOURCE & CHARGING OPTIONS

Built-in Li-ion battery supply. Recharged using an external charger. On a full charge can be used for 3-6 months. Charging time is 6-8 hours.

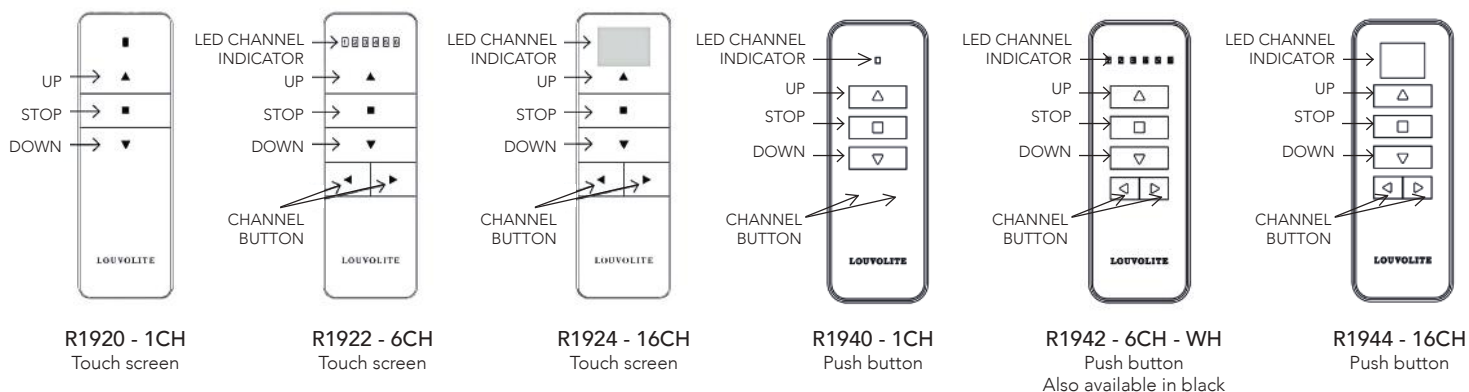


### KEY FEATURES

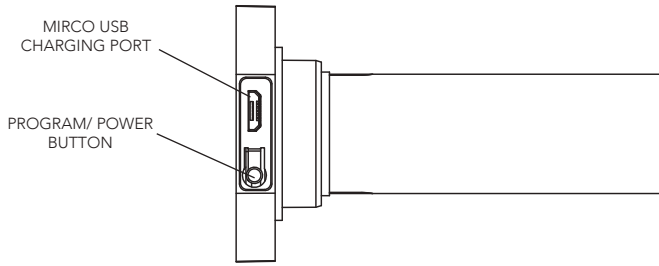
- DC power supply with energy saving patented design, 5V micro charging point with a 2600mAh Lithium battery built-in.
- Setting limits by remote control. Up to 6 limits, including upper/lower limit and 4 intermediate positions.
- 433.92MHz radio control.
- Short/open circuit protection
- Automatic alarm buzzer for low battery, then the motor will enter jog mode.
- Patented helical gear design, noise level lowered to 30dB.



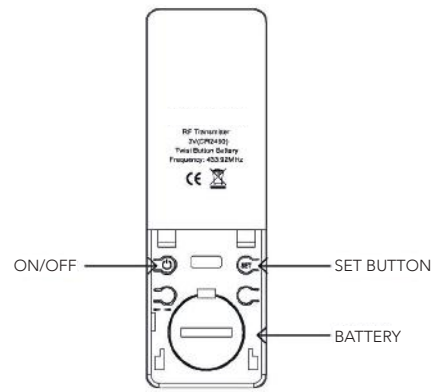
### REMOTE LAYOUT



# MOTOR HEAD



# REMOTE



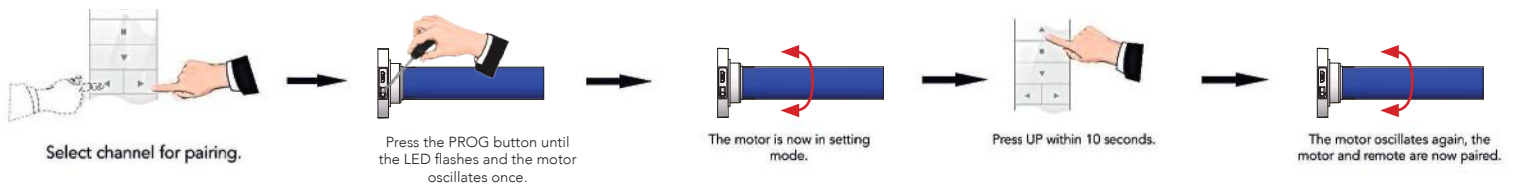
## POWER ON/OFF

After switching off the power the motor will not be able to receive remote signals.



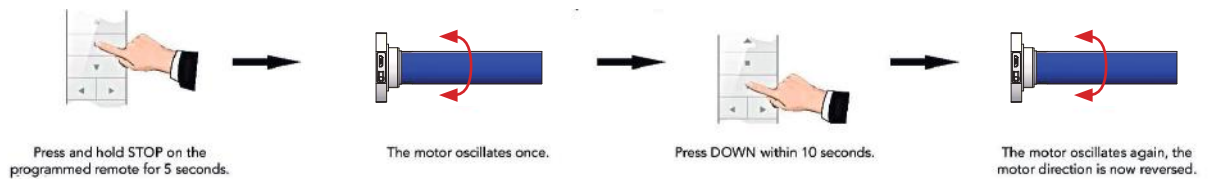
## PAIRING REMOTE

If there is no action in 10 seconds the motor will exit programming automatically.



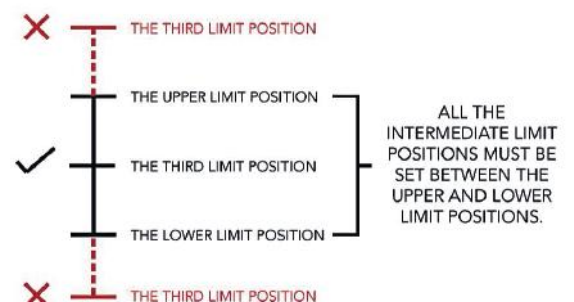
## CHANGE DIRECTION

If there is a need polarity can be reversed.



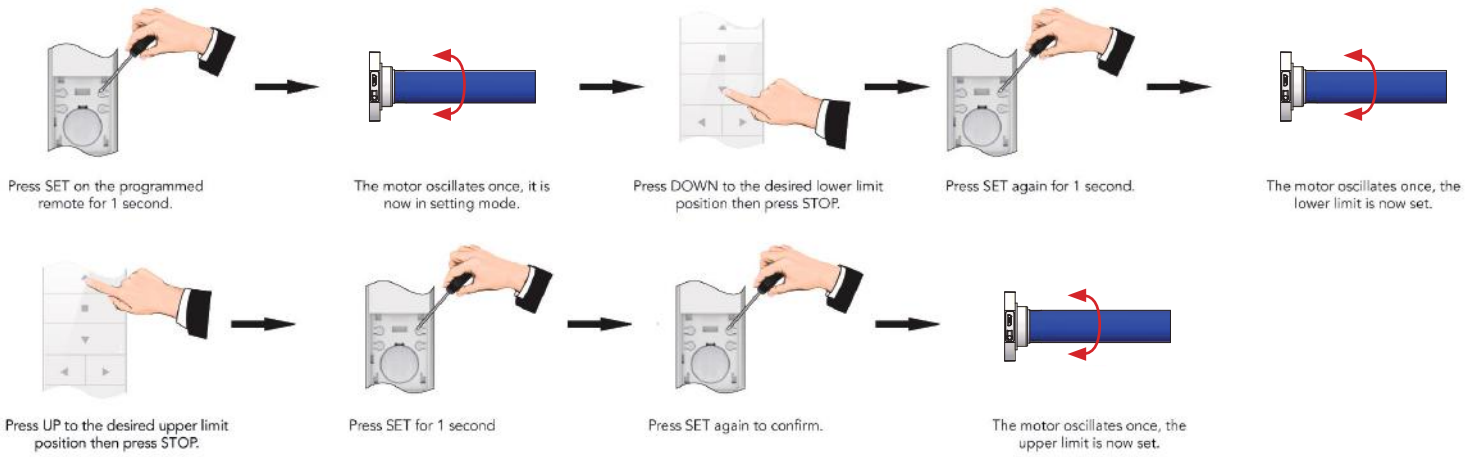
## LIMIT POSITION

1. The first and second positions are Upper/ Lower limit positions. The other four are intermediate positions.
2. After the Upper/ Lower limit positions are set, all the intermediate positions must be set between the Upper and Lower limit.
3. The Upper and Lower limit position can only be fine-tuned once set. It can only be removed by deleting all the motor memory.
4. Press the UP or DOWN button once and the motor will move to the next pre-set limit position. When the upper position has been reached the UP button will be unresponsive. When the lower position has been reached the down button will become unresponsive.
5. Press and hold the UP or DOWN button until the indicator on the programmed channel flashes twice, release, then the motor will move to the Upper or Lower limit position without stopping at any intermediate position.



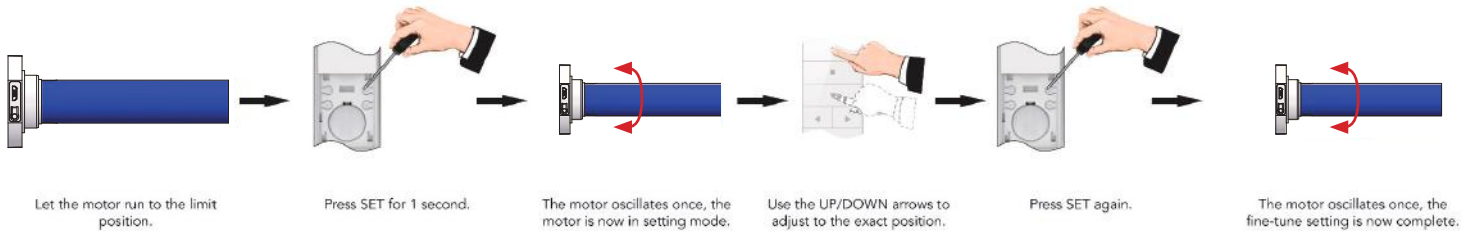
## SETTING UPPER AND LOWER LIMIT

Once the limits are set the system will exit the command automatically. Both limits must be set to exit mode.

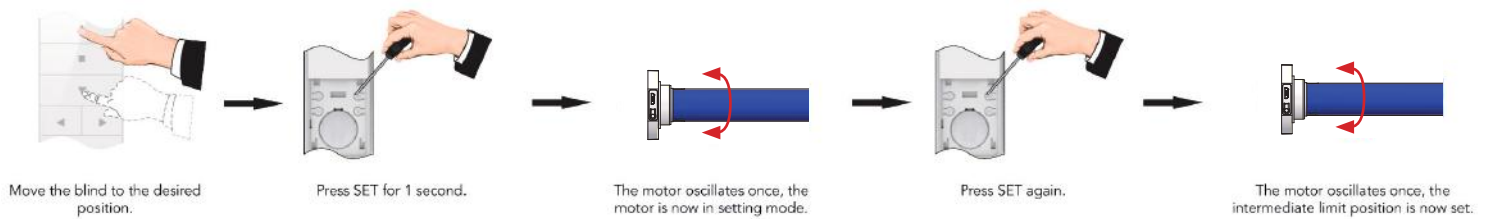


## FINE-TUNING LIMIT POSITIONS

Limits can be fine tuned individually. If there is no activity for 30 seconds the system will exit the command automatically.

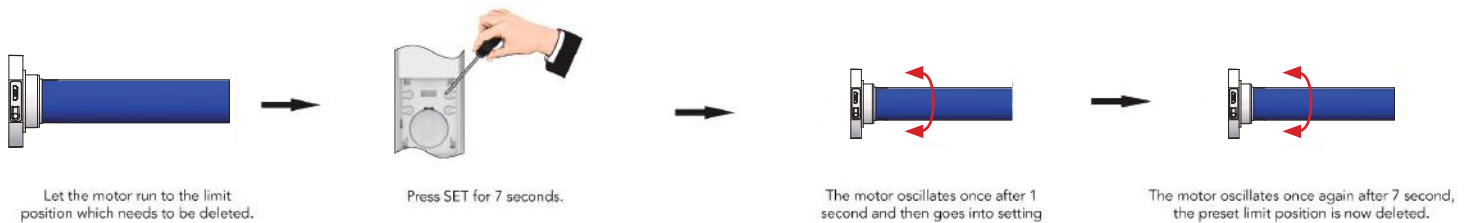


## SETTING INTERMEDIATE LIMITS



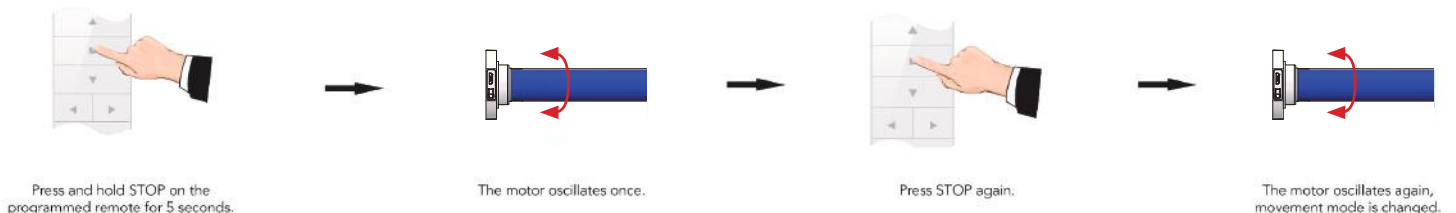
## DELETING LIMIT POSITIONS

The first limit cannot be deleted separately, to remove this limit all limits must be deleted.



## JOG MODE

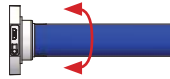
The default movement of the motor is continuous, it can be changed to jog movement or back to continuous movement for blind positioning or during fine tuning mode.



## ADDING A REMOTE



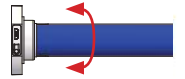
Press and hold STOP on the programmed remote for 5 seconds.



The motor oscillates once.



Press UP on the new remote.



The motor oscillates again, the new remote is now added.

## CHANNEL LOCKING

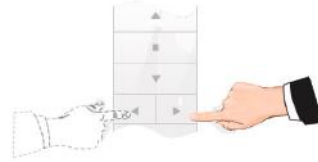


Using the LEFT or RIGHT button, select the desired channel you wish to lock the remote on.



Press STOP and RIGHT buttons together until selected channel flash or CC is displayed.

## CHANNEL UNLOCKING



Using the LEFT or RIGHT button, select the desired channel you wish to unlock on the remote.

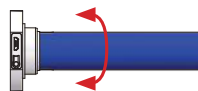


Press STOP and RIGHT buttons together for 3 seconds until all channels flash or CC is displayed. The remote is now unlocked.

## DELETE SINGLE CHANNEL



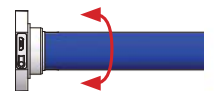
Select channel to delete. Press and hold STOP on the programmed remote for 5 seconds.



The motor oscillates once.



Press SET for 1 second.



The motor oscillates again, the selected channels memory is now deleted.

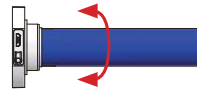
## DELETE ALL MEMORY

Deleting all memory returns the motor back to factory settings.

### Method 1



Press the button on the motor once, the RED light will flash.

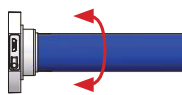


PRESS the button on the motor, the RED light will flash. PRESS the button on the motor once again and the RED light will flash. PRESS and HOLD the button on the motor, the RED light will flash - keep the button held down until the RED light flashes again. PRESS and HOLD the button on the motor again, the RED light will flash - keep the button held down until the RED light flashes again. The motor will jog up and down twice.

### Method 2



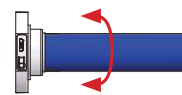
Press and hold STOP on the programmed remote for 5 seconds.



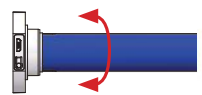
The motor oscillates once.



Press and hold SET for 7 seconds within 10 seconds of the motor oscillating.



The motor oscillates again for 1 second.



The motor oscillates twice for 7 seconds, all memory is now erased.

## TROUBLE SHOOTING

	ISSUE	CAUSE	SOLUTION
1	Motor does not run or runs slowly	Over-Load Protection	Motor has been operated frequently in a short space of time or is being operated in hot conditions. Allow the motor to cool before next operation.
2	Motor does not run or runs slowly	Motor Has Reached its Limit	Motor has reached a preset limit. Operate the blind in the opposite direction and check for movement.
3	Motor does not run or runs slowly	Out of Battery	Recharge the battery.
4	Motor does not run or runs slowly	In Power Off Mode	Turn power on to the motor.