

R1912 AND R1918 MOTOR FOR USE WITH R1926 WALL EMITTER

Operating Instructions

KEY FEATURES

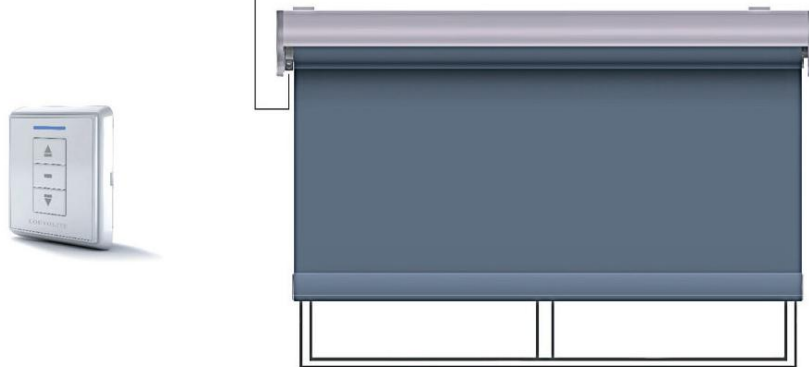


- DC power supply with energy saving patented design, 7.4V 3000mAh Lithium battery built-in.
- Setting limits by remote control. Up to 6 limits, including Upper/Lower limit and 4 intermediate limit positions.
- 433.92MHz Radio Control.
- Short/Open Circuit Protection.
- Automatic alarm buzzer for low battery, then the motor will enter into jog mode.
- Patented helical gear design, noise level lowered to 30dB.

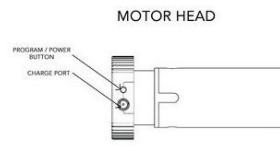
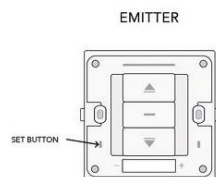
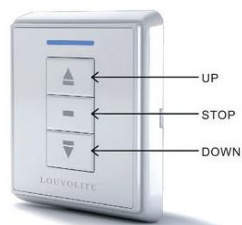
POWER SOURCE THE CHARGING OPTIONS

Built-in Li-ion battery power supply. Recharged using an external charger. On a full charge can be used for 3-6 months. Charging time is 6-8 hours.

DC8.4V Power Input

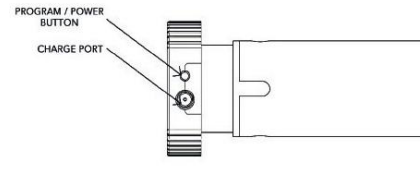


WALL EMITTER THE LAYOUT

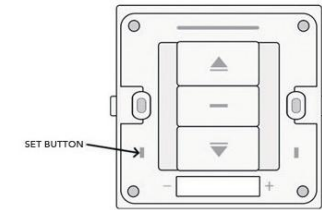


SETTING THE BLIND

MOTOR HEAD



REMOTE



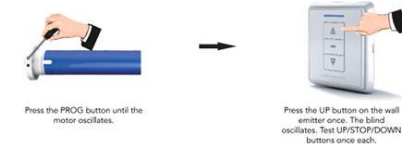
POWER ON/OFF

After switching off power the motor will not be able to receive remote signals.



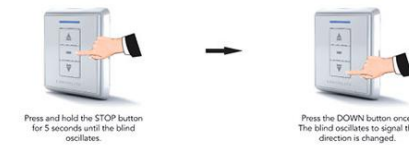
PAIRING WALL EMITTER

Multiple controllers can be linked to one blind.



CHANGE DIRECTION

If there is a need polarity can be reversed. Wait 30 seconds since last command.



LIMIT POSITION

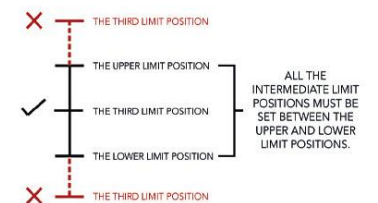
1) The first and second positions are Upper/Lower limit positions. The other four are intermediate positions.

2) After the Upper/Lower limit positions are set, all the intermediate positions must be set between the Upper and Lower limit.

3) The Upper and Lower limit position can only be fine-tuned once set. It can only be removed by deleting all the motor memory.

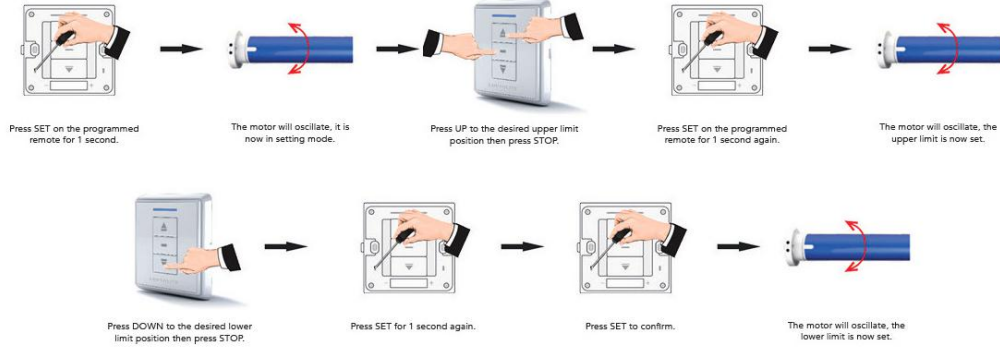
4) Press the UP or DOWN button once and the motor will move to the next pre-set limit position. When the upper position has been reached the UP button will be unresponsive. When the lower position has been reached the down button will become unresponsive.

5) Press and hold the UP or DOWN button until the indicator on the programmed channel flashes twice, release, then the motor will move to the Upper or Lower limit position without stopping at any intermediate position.



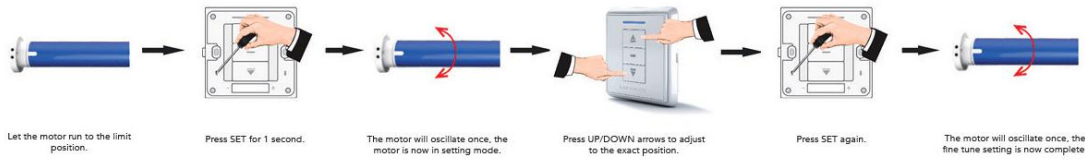
SETTING UPPER AND LOWER LIMIT

Once the limits are set the system will exit the command automatically. Both limits must be set to exit mode.

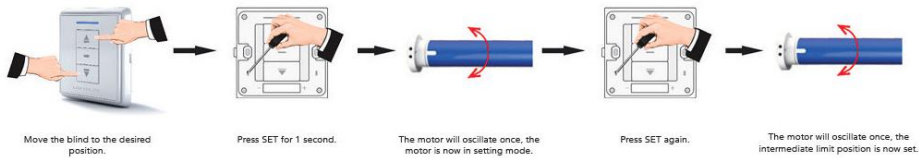


FINE-TUNING LIMIT POSITIONS

Limits can be fine tuned individually. If there is no activity for 30 seconds the system will exit the command automatically.

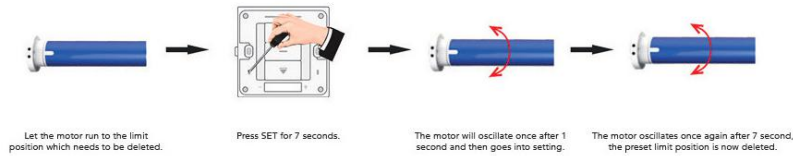


SETTING INTERMEDIATE LIMITS



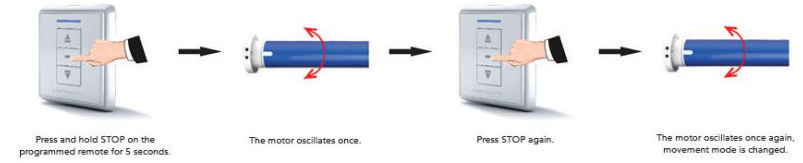
DELETING LIMIT POSITIONS

The first limit set cannot be deleted separately, to remove this limit all limits must be deleted.

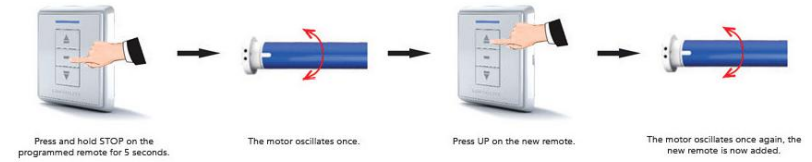


JOG MODE

The default movement of the motor is continuous, can be changed to jog movement or back to continuous movement for blind positioning or during fine tuning mode.

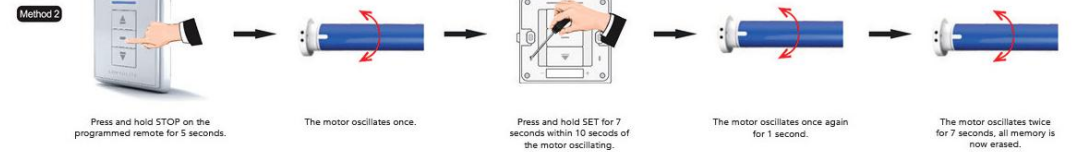
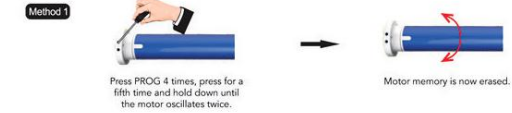


ADD REMOTE



DELETE ALL MEMORY

Deleting all memory returns the motor back to factory settings.



TROUBLE SHOOTING

	ISSUE	CAUSE	SOLUTION
1	Motor does not run or runs slowly	Over-Load Protection	Motor has been operated frequently in a short space of time or is being operated in hot conditions. Allow the motor to cool before next operation.
2	Motor does not run or runs slowly	Motor Has Reached its Limit	Motor has reached a preset limit. Operate the blind in the opposite direction and check for movement.
3	Motor does not run or runs slowly	Out of Battery	Recharge the battery.
4	Motor does not run or runs slowly	In Power Off Mode	Turn power on to the motor.